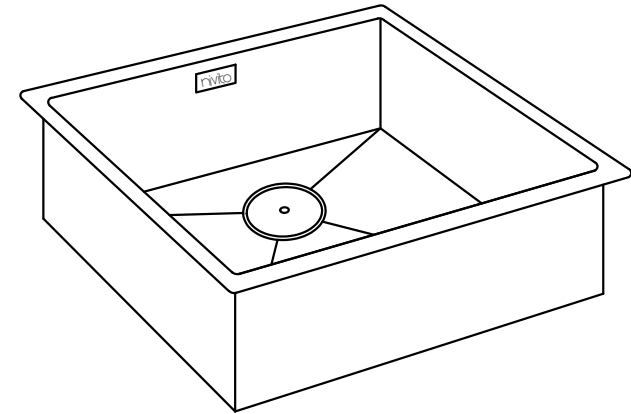


nivito™

INSTALLATION MANUAL



nivito™

www.nivito.com

Steel



Flush-Mount



Top-mount



Undermount

Granite



Top-mount



Undermount

Cube.

Sink care for Steel

Care instructions for all Nivito stainless steel sink

AVOID CONTACT WITH ROUGH OR DIRTY SURFACES as new polished stainless steel will show scratches!!

- All sinks should only be cleaned with soap/water and a soft cloth or sponge then rinsed and towelled dry.
- The coloured surfaces are a solid coating (Physical Vapour Deposit) or Powder coating (black/white) on the surface of the stainless steel only – harsh scratching should be avoided.
- Never use steel wool in or on the sink (steel wool should be avoided with any stainless-steel sinks as it can leave steel deposits on the sinks, which can cause rust.
- Never use harsh abrasive cleaning pads to clean sinks.
- Never use harsh chemicals or bleaches to clean sinks.
- Avoid prolonged contact with ordinary steel containers (e.g. tin cans), as these can rust and stain the sink.
- Avoid prolonged exposures to acids from fruit juices, salts, tea bags etc., as these may leave stains.

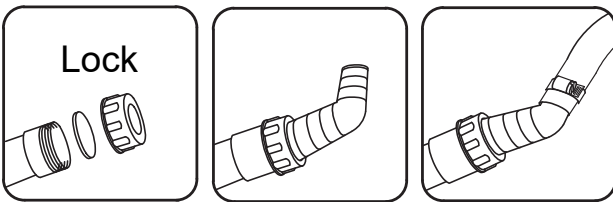
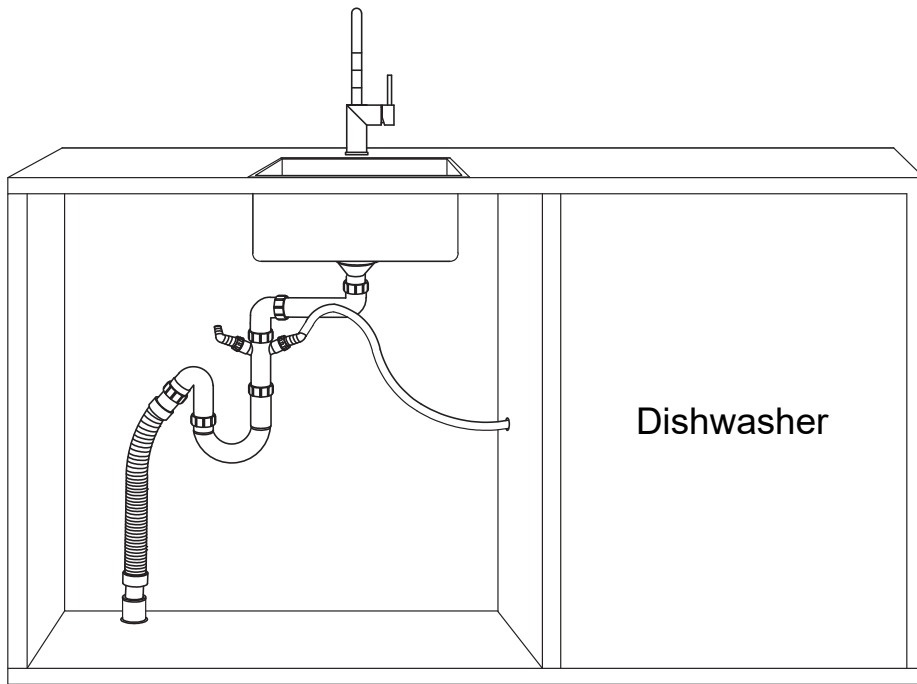
Sink care for Granit.

Care instructions for all Nivito stainless steel sink

AVOID CONTACT WITH ROUGH OR DIRTY SURFACES as new polished stainless steel will show scratches!!

- All sinks should only be cleaned with soap/water and a soft cloth or sponge then rinsed and towelled dry.
- Never use steel wool in or on the sink.
- Never use harsh abrasive cleaning pads to clean sinks.
- Never use harsh chemicals or bleaches to clean sinks.
- Avoid prolonged exposures to acids from fruit juices, salts, tea bags etc., as these may leave stains.

Connect supplies & drain fittings



Connect the sink drain, trap and waste fittings. Attach water supply and turn on the water and check for leaks. Fill the sink with water and check for possible leaks around the drain flange (s). Release water from the sink and check for possible leaks at drain connections or disposer connections. Correct any joints that leak.



Check the condition of the sink before installation

Do not install if defects are found. By installing the sink, the owner / installer accepts that the product is free of defects.



Check if you have the correct sink model

The model number on the sink must match the model of sink the customer ordered. Do not install if incorrect.



Avoid scratches

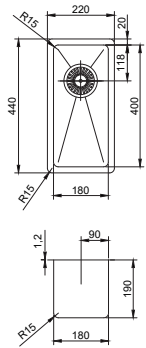
Stainless steel can be scratched if you are not careful during assembly.



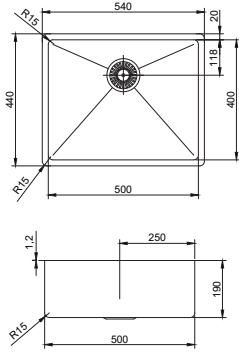
Please Note!

It's important that the installer reads through the full manual.

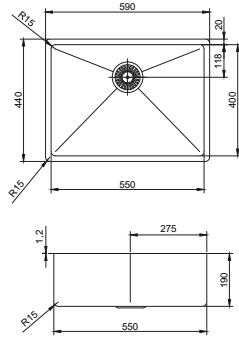
Cube180



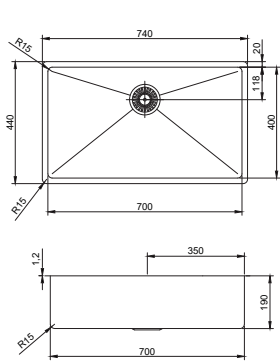
Cube500



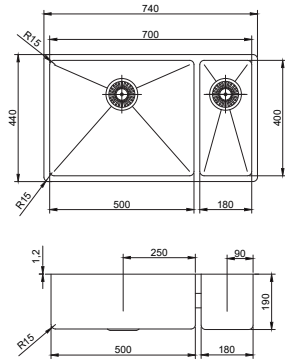
Cube550



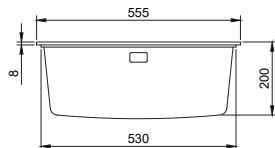
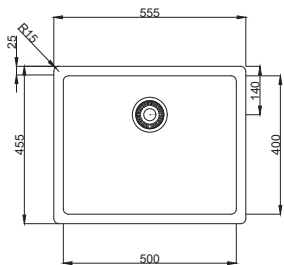
Cube700



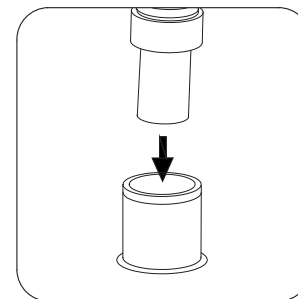
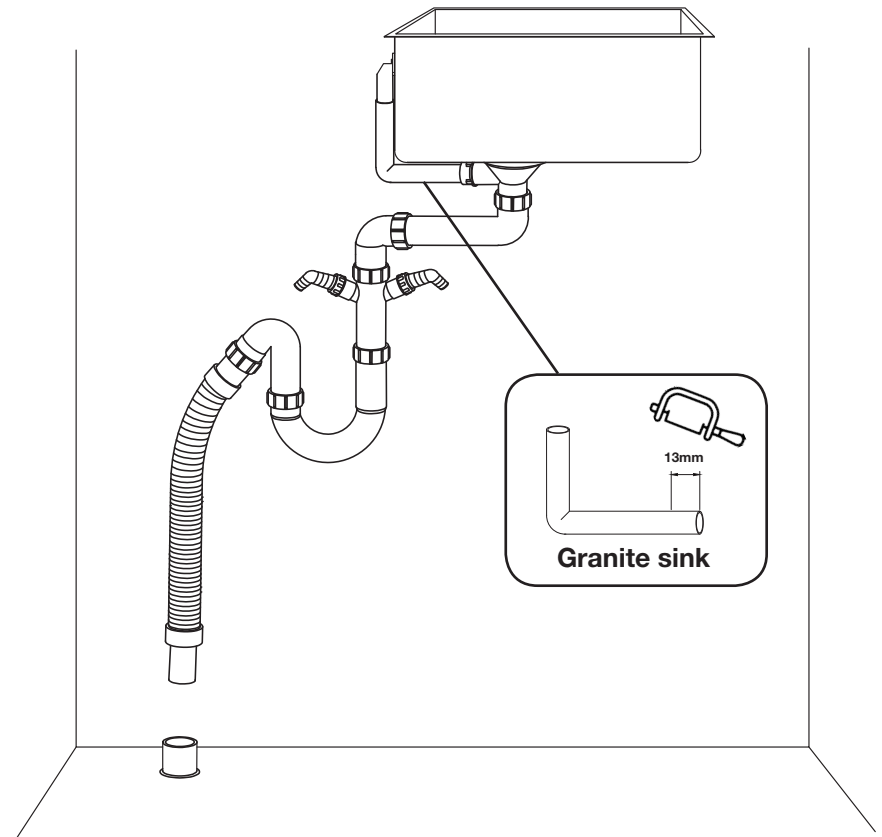
Cube500-180



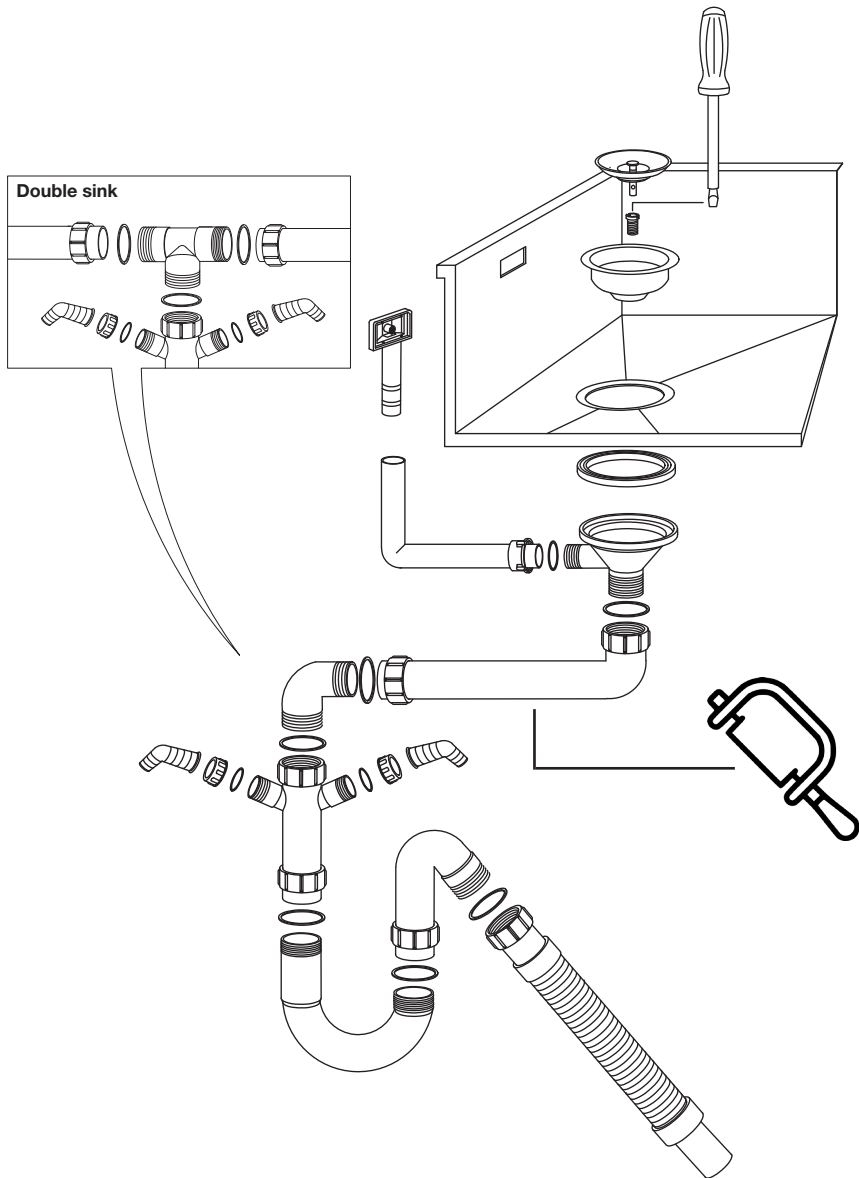
Cubegr granite



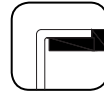
Connect supplies & drain fittings



Connect supplies & drain fittings

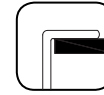


Steel sink

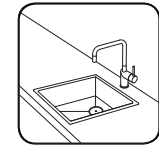


Flush-Mount

Granite sink
Steel sink



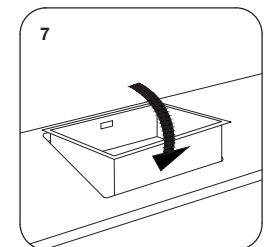
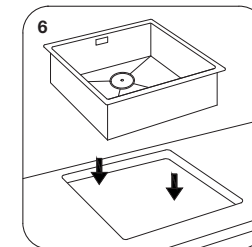
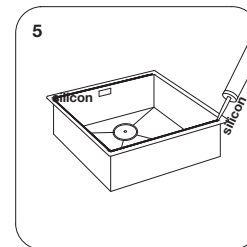
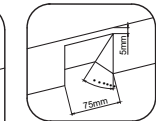
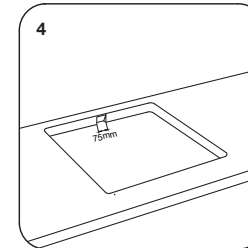
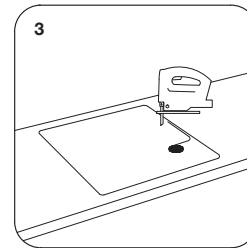
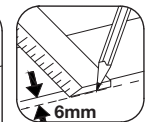
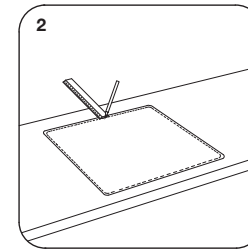
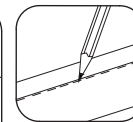
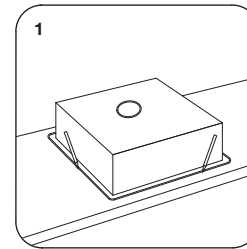
Top-mount



NEEDED TOOLS

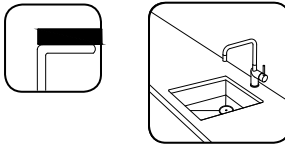


PLEASE NOTE: drawings are not to scale.
They are to assist only.



Granite sink
Steel sink

Undermount

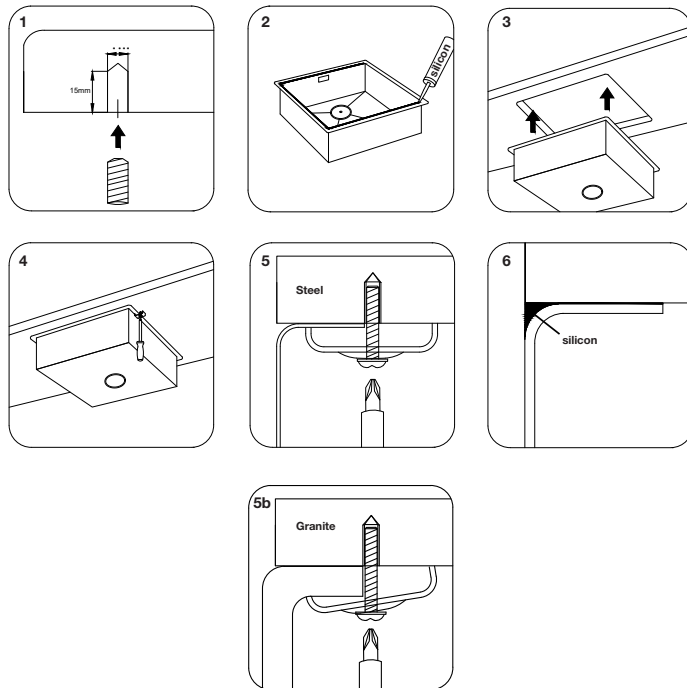


NEEDED TOOLS



Undermount installation For the undermount sinks, proceed as for the normal built-in sinks. Make a cut-out on the worktop following the template and/or instructions provided with the sink. Before installing the sink, seal with silicone. Tighten the brackets.

PLEASE NOTE: drawings are not to scale. They are to assist only.



Connect supplies & drain fittings

